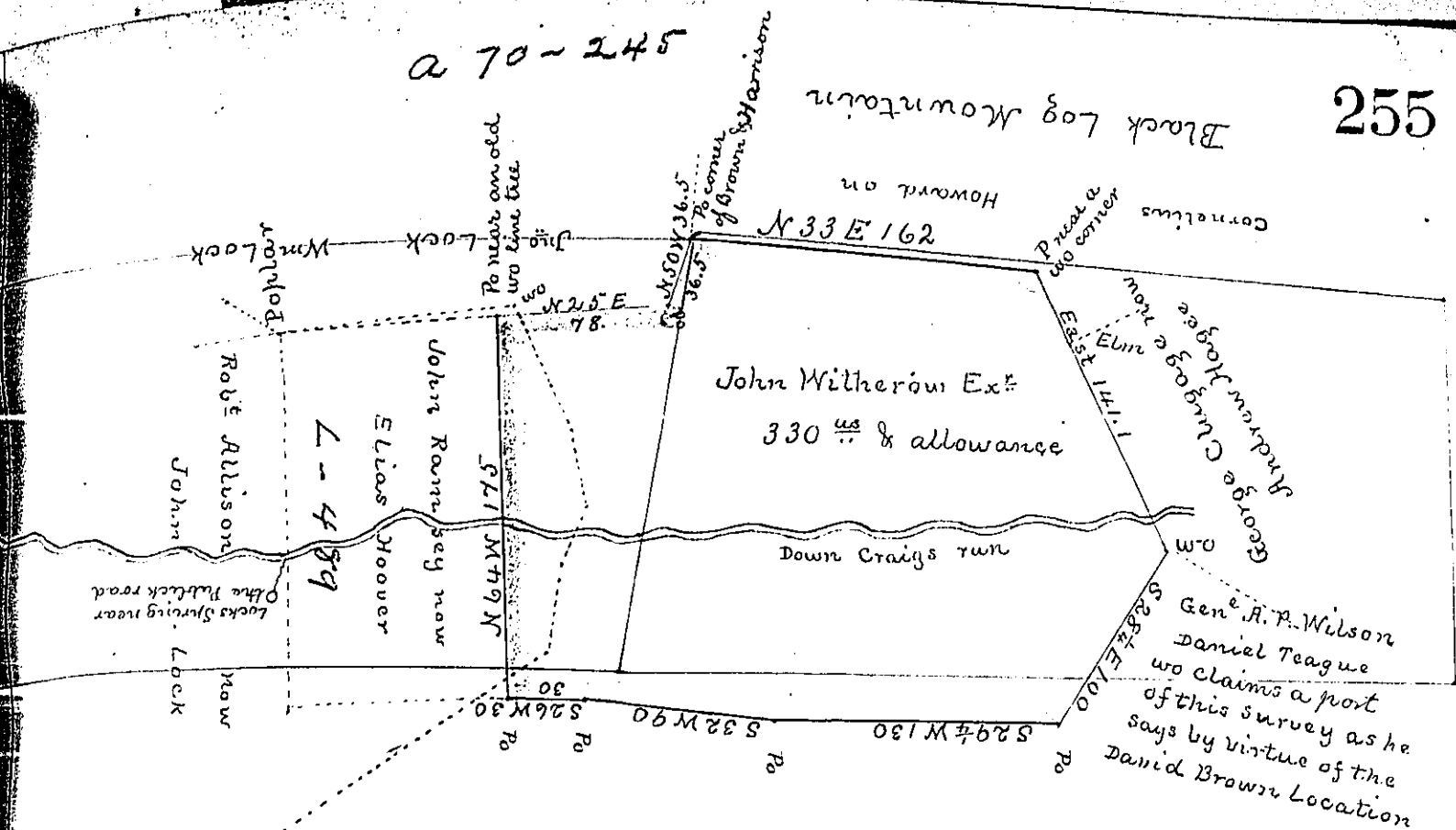


a 70-245



Shade Mountain

Situate in Springfield Cromwell Township Huntingdon County
 containing Three Hundred & Thirty acres & allowance &c (being part
 of an Improvement made by John Ramsey) surveyed in pursuance
 of a warrant granted to John Witherow Ex: &c for the use of Ramseys
 heirs dated the 9th day of Oct 1846 (with Int to the 1st July 1800)
 for 300 acres.

Saml Caldwell D.S.

Genl John Laporte Esqr S.G.

th. the red smooth lines represent two surveys said to be made on locations
 or orders dated in 1767 in the names of John Harrison & David Brown (the Har-
 rison survey is on the S.W. & the Brown Survey on the North East) but they
 have been neglected and
 have now nearly all covered by Improvers Warrants which hold against
 them the red dotted lines represent a part of John Locks survey made
 by me in August 1846 by his representing the land to be his & I at
 that time not knowing where the lines of Ramseys Improvement
 were the Black dotted lines represent the balance of Ramseys Im-
 provement Warranted in the name of E. Hoover & returned with
 this survey

Saml Caldwell W.S.

IN TESTIMONY that the above is a copy of the original remaining on file in the
 Department of Internal Affairs of Pennsylvania, made con-
 formably to an Act of Assembly approved the 16th day of
 February, 1833, I have hereunto set my Hand and caused
 the Seal of said Department to be affixed at Harrisburg, this

twelfth day of March 1878

J. Simpson Africa,
 Secretary of Internal Affairs